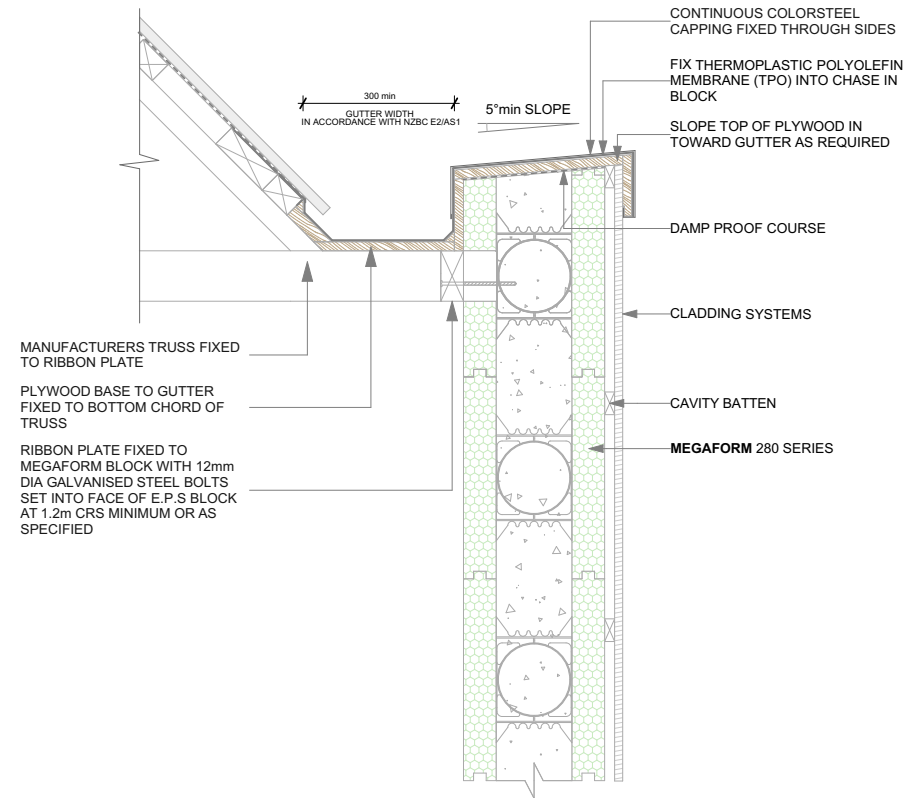


**INTERNAL GUTTER AND PARAPET DETAILS
(FIBERGLASS REINFORCED MEMBRANE)**

NOTE:
ALL REINFORCEMENT SHOWN IS INDICATIVE ONLY. ADDITIONAL REINFORCEMENT MAY BE NEEDED TO MEET SPECIFIC REQUIREMENTS (E.G. STRENGTH, STABILITY, DURABILITY, APPEARANCE, ETC.) RELEVANT TO THE ELEMENT BEING DESIGNED, AND TO ENSURE THAT THE DESIGN IS FIT FOR PURPOSE. FINAL DESIGN TO BE OVERSEEN BY AN APPROPRIATELY QUALIFIED STRUCTURAL ENGINEER.



**INTERNAL GUTTER AND PARAPET DETAILS
(THERMOPLASTIC POLYOLEFIN MEMBRANE)**

GUTTER AND PARAPET DETAILS 2